

SCHEDULE OF PLANT MATERIAL

CODE	BOTANICAL NAME	COMMON NAME	QUANTITY	MATURE HEIGHT	CONTAINER SIZE	STAKES
AAm	<i>Acmena smithii</i> 'Allyn Magic'	Dwarf Lilli Pilli	10	1m	200mm	-
ASh	<i>Acmena smithii</i> 'Hedgemaster'	Dwarf Lilli Pilli	49	1.5m	200mm	-
ASm	<i>Acmena smithii</i> 'Minor'	Dwarf Lilli Pilli	9	3m	200mm	-
DB	<i>Dianella</i> 'Breeze'	Dianella Breeze	42	0.6m	140mm	-
DSs	<i>Dianella</i> 'Silver Streak'	Silver Streak Dianella	108	0.4m	140mm	-
DRe	<i>Dichondra repens</i>	Kidney Weed	33	0.4m	140mm	-
DRlr	<i>Dianella revoluta</i> 'Little Rev'	Little Rev Dianella	70	0.3m	140mm	-
EM	<i>Eucalyptus moluccana</i>	Grey Box	1	15m	45 litre	2
ER	<i>Elaeocarpus reticulatus</i>	Blueberry Ash	5	5m	45 litre	2
HV	<i>Hardenbergia violacea</i>	Native Sarsparilla	34	prostrate	140mm	-
HS	<i>Hibbertia scandens</i>	Guinea Flower	85	0.4m	140mm	-
LLb	<i>Leptospermum</i> 'Lemon Bun'	Dwarf Leptospermum	22	0.6m	200mm	-

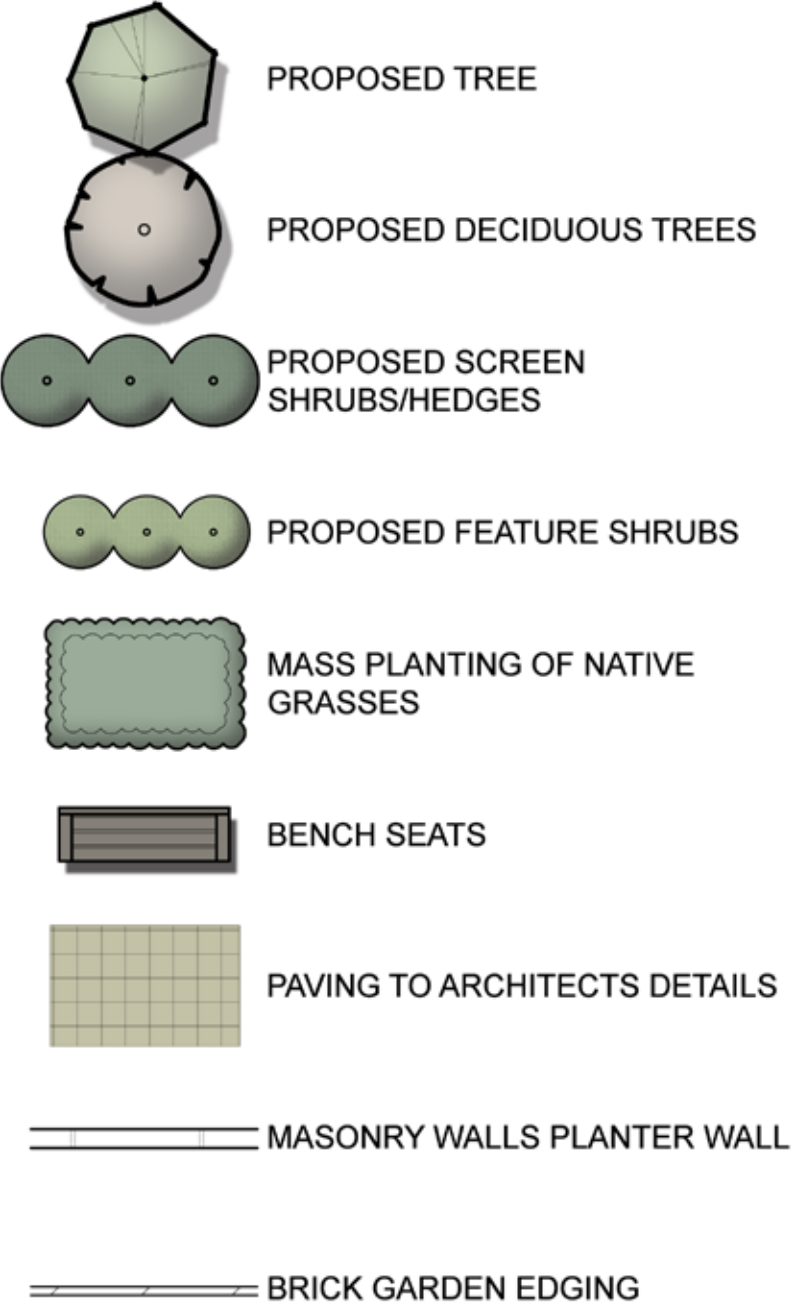
MLg	<i>Magnolia grandiflora</i> 'Little Gem'	Dwarf Magnolia	1	5m	200 litre	2
NS	<i>Nyssa sylvatica</i>	Tupelo	1	15m	45 litre	2
PDd	<i>Phormium</i> 'Dark Delight'	New Zealand flax	31	1m	140mm	-
PX	<i>Philodendron xanadu</i>	Xanadu	36	0.5m	200mm	-
PCb	<i>Pyrus calleryana</i> 'Bradford'	Ornamental Pear	5	12m	45 litre	2
SAe	<i>Syzygium australe</i> 'Elegance'	Dwarf Lilli Pilli	15	2m	200mm	-
SSn	<i>Syzygium</i> 'Straight and Narrow'	Lilli Pilli	12	6m	200mm	-
STt	<i>Syzygium</i> 'Tiny Trev'	Sweet Viburnum	17	0.6m	200mm	-
TJ	<i>Trachelospermum jasminoides</i>	Star Jasmine	8	0.4m	140mm	-
TL	<i>Tristanopsis laurina</i>	Water Gum	2	8m	45 litre	2
VT	<i>Viburnum tinus</i>	Sweet Viburnum	26	3m	200mm	-
VH	<i>Viola hederacea</i>	Native Violet	59	0.1m	140mm	-

1	5m	200 litre	2
1	15m	45 litre	2
31	1m	140mm	-
36	0.5m	200mm	-
5	12m	45 litre	2
15	2m	200mm	-
12	6m	200mm	-
17	0.6m	200mm	-
8	0.4m	140mm	-
2	8m	45 litre	2
26	3m	200mm	-
59	0.1m	140mm	-

BASIX CALCULATIONS

ZONE	AREA	ZONE	AREA
COMMON AREAS		Unit 1 Garden	37.77m ²
Garden Areas	241.60m ²	Native/Low Water Use Planting	37.77m ² (100.00%)
Native/Low Water Use Planting	99.28m ² (41.09%)	Lawn	0.00m ²
Lawn	0.00m ²	Unit 2 Garden	0.00m ²
		Native/Low Water Use Planting	0.00m ² (0.00%)
		Lawn	23.91m ²
		Unit 3 Garden	0.00m ²
		Native/Low Water Use Planting	0.00m ² (0.00%)
		Lawn	33.31m ²

LEGEND



REVISIONS

A 23.01.23

1. Revisions to suit Council and Design Excellence Panel comments.

Verify all dimensions on site before commencing construction or ordering materials. Verify the dimensions of all manufactured products before installation. Use figured dimensions in preference to scaled dimensions. Report any discrepancies to the Landscape Architect for a decision before work commences.

NOTES

This plan is to be read in conjunction with all documentation prepared by Gran Associates Australia Architects Pty Ltd.



office. 16/303 pacific highway
lindfield nsw 2070
postal. 25 bent street
lindfield nsw 2070
ph 9416 4290 fax 9416 4735
A.C.N 097 328 580
email ijla@netspace.net.au

project

Proposed Development

20-22 Hume Highway, Warwick Farm

drawing

Landscape Plan

client

Dyvest Group

date

January 2023

job.dwg no.

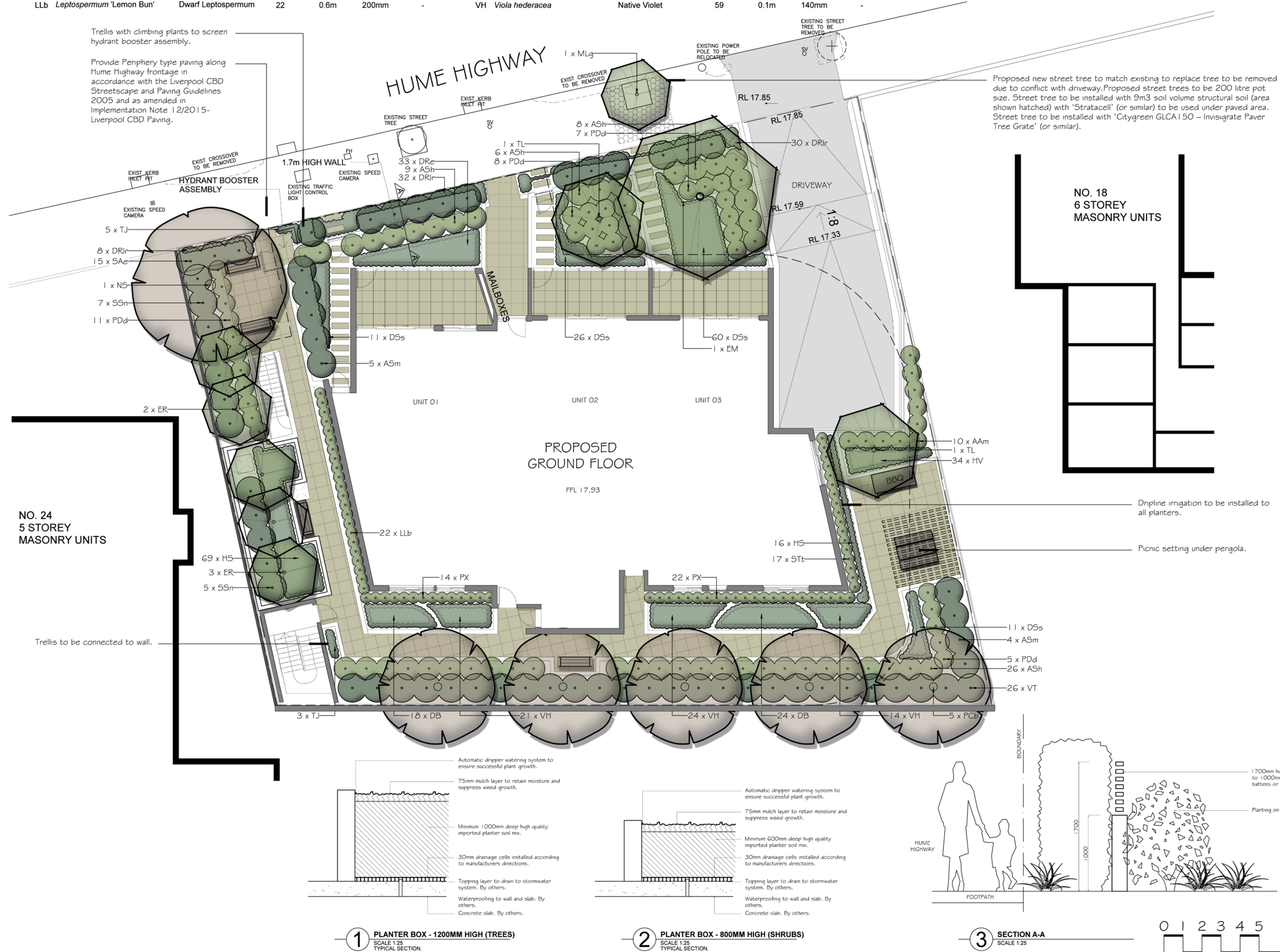
111.23(21)/255'A'

designed by

IJ

drawn by

HL



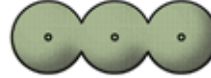


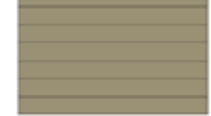
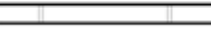

SCHEDULE OF PLANT MATERIAL

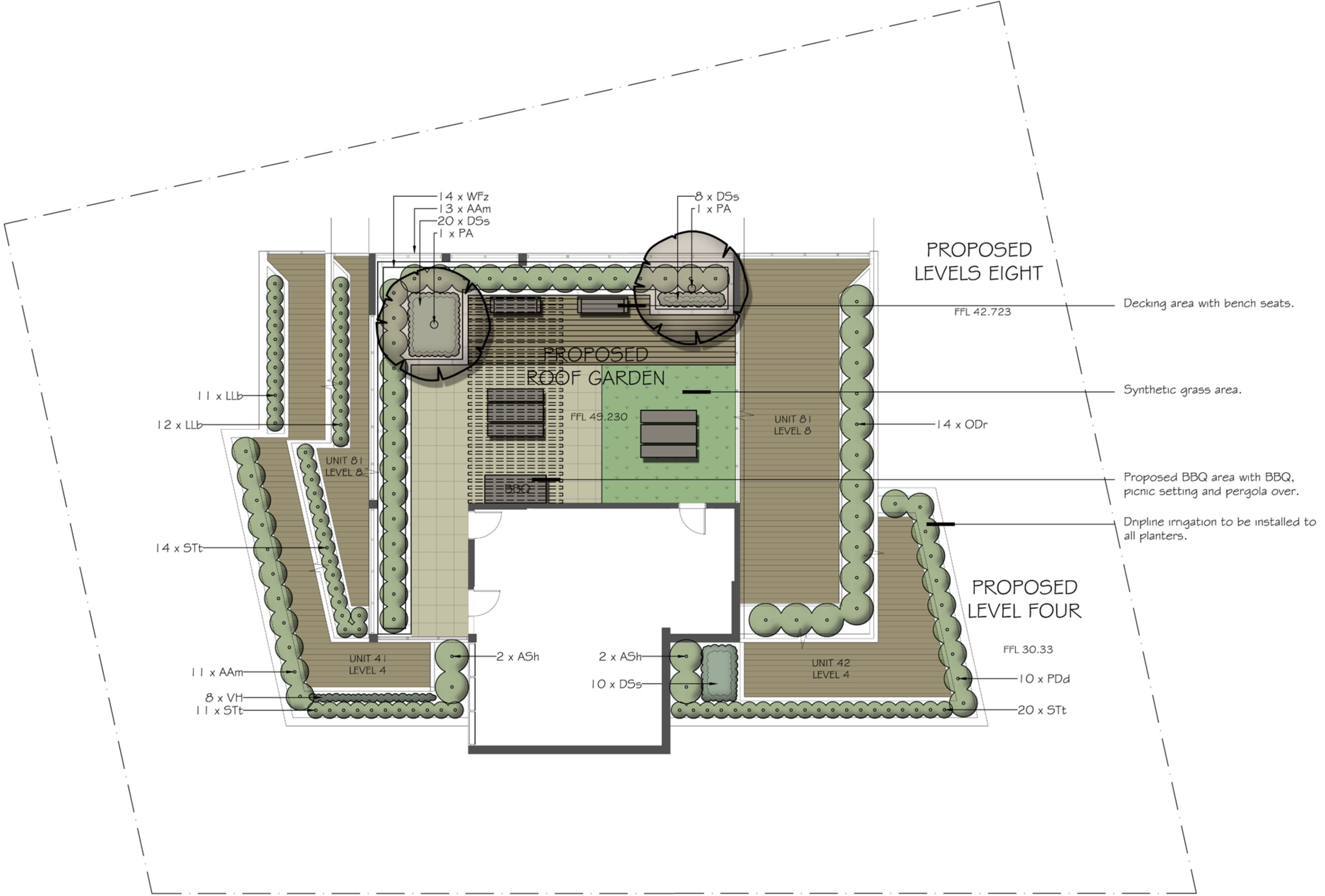
CODE	BOTANICAL NAME	COMMON NAME	QUANTITY	MATURE HEIGHT	CONTAINER SIZE	STAKES
AAm	<i>Acmena smithii</i> 'Allyn Magic'	Dwarf Lilli Pilli	24	1m	200mm	-
ASh	<i>Acmena smithii</i> 'Hedgemaster'	Dwarf Lilli Pilli	4	1.5m	200mm	-
DSs	<i>Dianella</i> 'Silver Streak'	Silver Streak Dianella	38	0.4m	140mm	-
LLb	<i>Leptospermum</i> 'Little Bun'	Dwarf Leptospermum	23	1m	200mm	-
ODr	<i>Ozothamnus</i> 'Radiance'	Rice Flower	14	2m	200mm	-
PA	<i>Plumeria acutifolia</i>	Frangipani	2	4m	45 litre	2
PDd	<i>Phormium</i> 'Dark Delight'	New Zealand flax	10	1m	140mm	-
STt	<i>Syzygium</i> 'Tiny Trev'	Sweet Viburnum	45	1m	200mm	-
VT	<i>Viburnum tinus</i>	Sweet Viburnum	9	3m	200mm	-
VH	<i>Viola hederacea</i>	Native Violet	8	0.1m	140mm	-
WFz	<i>Westringia fruticosa</i> 'Zena'	Dwarf Coastal Rosemary	14	1m	200mm	-

BASIX CALCULATIONS

ZONE	AREA	ZONE	AREA
COMMON ROOF AREAS		Unit 41 Garden	17.24m²
Garden Areas	19.58m²	Native/Low Water Use Planting	0.00m² (0.00%)
Native/Low Water Use Planting	0.00m² (0.00%)	Unit 42 Garden	17.10m²
		Native/Low Water Use Planting	0.00m² (0.00%)
		Unit 81 Garden	24.08m²
		Native/Low Water Use Planting	0.00m² (0.00%)

LEGEND

-  PROPOSED FEATURE SHRUBS
-  MASS PLANTING OF NATIVE GRASSES
-  PAVING TO ARCHITECTS DETAILS
-  BALCONIES TO ARCHITECTS DETAILS
-  MASONRY WALLS PLANTER WALL
-  BENCH SEATS



Acmena smithii 'Allyn Magic'



Dianella 'Silver Streak'



Hardenbergia violacea



Leptospermum 'Lemon Bun'



Ozothamnus 'Radiance'



Westringia fruticosa 'Zena'



Elaeocarpus reticulatus



Hibbertia scandens



Nyssa sylvatica



Phormium 'Dark Delight'

REVISIONS

A 23.01.23

1. Revisions to suit Council and Design Excellence Panel comments.

Verify all dimensions on site before commencing construction or ordering materials. Verify the dimensions of all manufactured products before installation. Use figured dimensions in preference to scaled dimensions. Report any discrepancies to the Landscape Architect for a decision before work commences.

NOTES

This plan is to be read in conjunction with all documentation prepared by Gran Associates Australia Architects Pty Ltd.



office. 16/303 pacific highway
indfield nsw 2070
postal. 25 bent street
indfield nsw 2070
ph 9416 4290 fax 9416 4735
A.C.N 097 328 580
email ija@netspace.net.au

project

Proposed Development

20-22 Hume Highway, Warwick Farm

drawing

Rooftop Plan

client

Dyvest Group

date

January 2023

job.dwg no.

111.23(21)/256'A'

designed by

IJ

scale

1:100 @ A1

1:200 @ A3

no. in set

TWO/TWO

drawn by

HL



Philodendron xanadu



Pyrus calleryana 'Bradford'



Syzygium 'Straight and Narrow'



Trachelospermum jasminoides



Tristaniopsis laurina



Viburnum tinus



Viola hederacea

